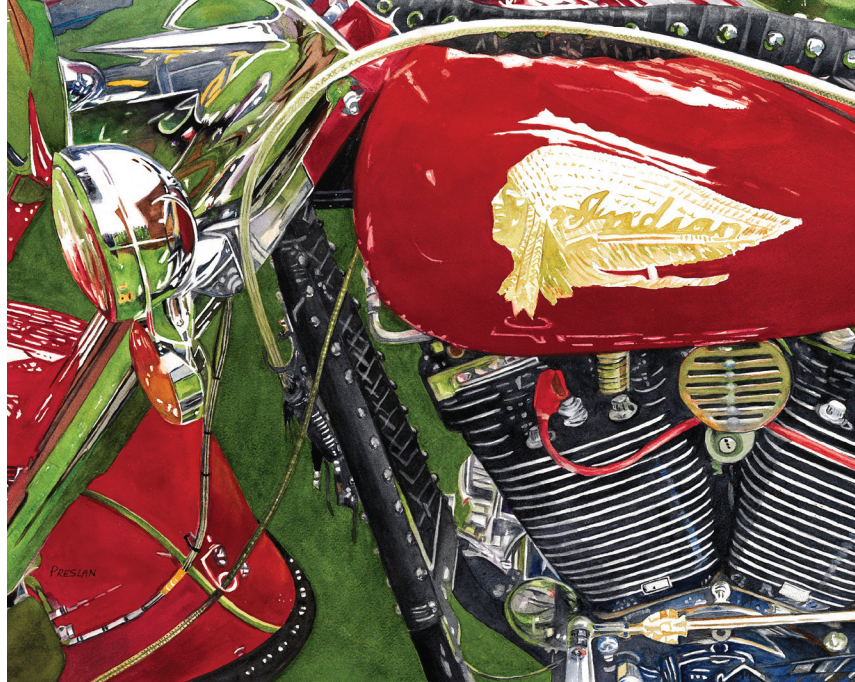
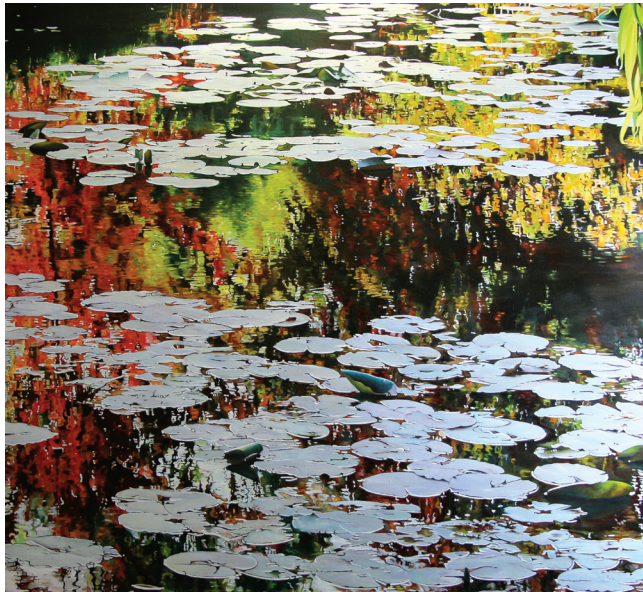


# David J. Wagner L.L.C.

TRAVELING MUSEUM EXHIBITIONS

[davidjwagnerllc.com/exhibitions.html](http://davidjwagnerllc.com/exhibitions.html)







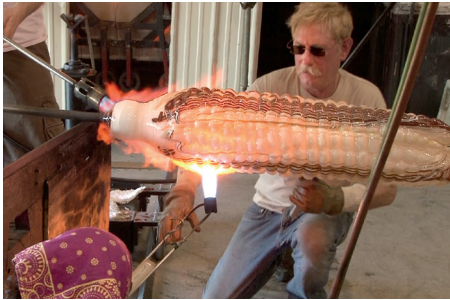
Cheryl Kelley, *Blue Corvette*  
Lory Lockwood, *All The Pretty Horses*

# Luster: Realism and Hyperrealism in Contemporary Automobile and Motorcycle Painting

LUSTER is comprised of 50 paintings by nearly 15 of today's top realists and hyperrealists who specialize in automobiles and motorcycles as their primary subject of choice. LUSTER encompasses a broad range of cars and motorcycles from vintage classics of the 1940's and before to more recent vehicles. During the post-World War II boom years, cheap gas and the advent of the Interstate Highway System in 1956 propelled automotive design and sales. In the 1950s, the industry reached new heights by offering consumers increased horse power for thrust and speed, and more artfully, integrated design which was dramatized in the 1960's with features such as tail fins. LUSTER features paintings of passenger automobiles from those boom years and since, plus a range of motorcycles and racing vehicles. Like the shiny automobiles and motorcycles portrayed by the exhibit's artists, its paintings can be characterized by the luster that permeates their imagery. Chrome ornamentation and trim together with enameled bodywork, glass, souped-up engines, and interior configurations to meet the needs of purpose-built vehicles of all sorts: these are the surfaces which recent realists and hyperrealists have exploited to generate true, virtuosic masterpieces.

---

**CONTENTS:** 50 original paintings in a range of size and realist and hyper-realist styles  
[davidjwagnerllc.com/Luster\\_Exhibition.html](http://davidjwagnerllc.com/Luster_Exhibition.html)



Installation view of *Primordial Shift*  
Mick Meilahn Working with his Hot Glass Team

# Mick Meilahn's Primordial Shift

Mick Meilahn's PRIMORDIAL SHIFT is an installation of a field of hand-blown glass ears of corn suspended on stalks of cord with leaves of bronze, and a video backdrop to create the illusion of a crop gently swaying in the breeze. The installation is ceiling hung with a foot print of approximately 30' x 30'. Video projects a field from Meilahn's own family farm in the round on gallery walls, with audio of rustling leaves and chirping birds. Also included in the exhibition is BONANZA, a six-foot tall bushel basket constructed of wood filled with corn cobs of glass. The installation, which was featured for a year at Houston's Health Museum, deals with the implications of genetic engineering and the ecology of food, in particular, corn, which was introduced by Native Americans to Europeans over 500 years ago. The artist learned glass making as a student in Wisconsin in the 1960's and, along with other glass artists of his generation, subsequently formed a wave that established The American Studio Glass Movement.

---

**CONTENTS:** 32 hand-blown glass ears of corn averaging 4' suspended on stalks of cord with cast bronze leaves, and video.  
[michael-meilahn.com/curriculum-vitae-1](http://michael-meilahn.com/curriculum-vitae-1)



## Sayaka Ganz: Reclaimed Creations

Sayaka Ganz was born in Yokohama, Japan and grew up in Japan, Brazil, and Hong Kong. She received a Bachelor of Fine Arts degree from Indiana University, and a Master of Fine Arts degree in sculpture from Bowling Green State University in Ohio. Sayaka Ganz utilizes ordinary plastic objects such as utensils, like brush strokes which appear visibly unified at a distance though separated at close proximity. Underlying her creative aesthetic is an environmentally-conscious recycling ethic. She describes her style as “3D impressionism.” Sculptures in RECLAIMED CREATIONS embody a range of subjects, many in motion, all of which are rich in color and energy and create an illusion of form. Exhibit contents range from *Nirvana* (bird of paradise), 2015, 28" x 50" x 32"; to *Travelers* (polar bear mother and cubs) 2013, 8' x 10' x 13'; to *Uta* (humpback whale) 2013, 53' x 39' x 14'.



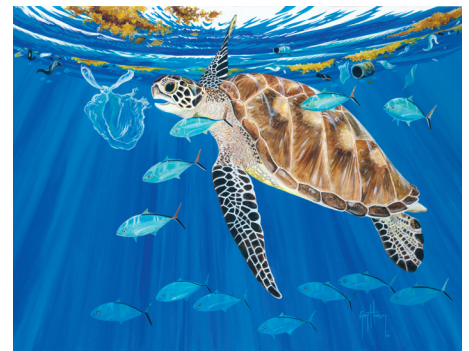
Sayaka Ganz, *Explorers Lark and Frolic*.  
Sayaka Ganz, *Emergence*

**CONTENTS:** 15 sculptures fabricated of reclaimed plastic objects, wire, & cable ties and 6 collagraphs, all sized for a gallery space of approximately 2,500 sq. ft., plus installation instructional videos. [sayakaganz.com/traveling-museum-exhibition](http://sayakaganz.com/traveling-museum-exhibition)

## Environmental Impact

The purpose of ENVIRONMENTAL IMPACT is to 1.) recognize, document, and share the work of leading contemporary artists who chose to focus their work on global as well as local environmental issues; and 2.) to heighten public awareness and concern about the intentional or unintentional consequences of human action or inaction, through the power of this art. Paintings, photographs, and sculptures in this exhibit deal with ominous issues ranging from global warming to unabated resource development, and industrial scale consumption . . . and consequences such as drought, wild fires, habitat loss, and pollution. The list of phenomena that inflict the planet is daunting and sadly, sure to grow in scale and volume in seen and unforeseen ways which will impact humans and the other inhabitants for years to come. To produce ENVIRONMENTAL IMPACT, Curator David Wagner drew upon a diverse range of top-tier artists whose work is not only hard-hitting, but which also has propelled the Environmental Movement through the age in which we now live. The exhibition has been covered extensively by The Millennium Alliance for Humanity and Biosphere at Stanford University.

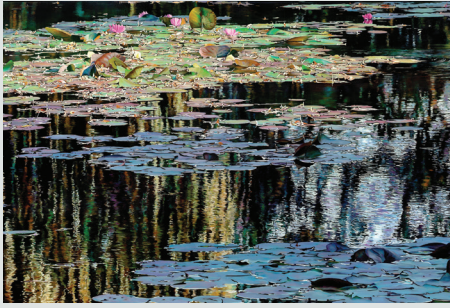
**CONTENTS:** 60 artworks in a range of media. [davidjwagnerllc.com/Environmental\\_Impact-Sequel.html](http://davidjwagnerllc.com/Environmental_Impact-Sequel.html)



Guy Harvey, *La linea de Basura* (Green Turtle with plastic bag)

Jeff Frost, 20160623 *LakeFire Milky Way Overlook*  
35mm d800e-8147





Laurence Saunois, *La danse de la Lumière/Dance of Light* (Detail)

## Nymphes Luminansis: The Water Lillies of Light by Laurence Saunois

NYPHEUS LUMINANSIS is a series of ten square (100 x 100 cm) and double-square (100 x 200 cm) oil paintings based on the theme so dear to Claude Monet: The water lilies of Giverny. The intent of the artist, Laurence Saunois, is to offer viewers the opportunity to experience nature’s magic, through the sensibility of contemporary French impression. The cumulative experience is akin to the visual sensation of being drenched by color illuminated by the sun, brought to life by the interplay of shadows and light. The project is supported by Figeac, the artist’s hometown in the Midi-Pyrénées region, rich in history and nestled in the natural beauty of southern France.

**CONTENTS:** Series of 10 waterlily paintings; available in North America in 2026.  
[laurencesaunois.net/nymphes-luminansis-colors-light](http://laurencesaunois.net/nymphes-luminansis-colors-light)



Stephen Gorman, *Massive Iceberg Looming Over Qeqertarsuaq*

## Last Days of the Great Ice: Poignant Masterworks by Stephen Gorman

The Arctic is warming four times faster than the global average, and nowhere are the effects of climate change more evident. Stephen Gorman’s photographs document the rapid unraveling of Arctic ecosystems and emerging threats to traditional Inuit ways of life. LAST DAYS OF THE GREAT ICE showcases 30 of Gorman’s most poignant images—hard-won photographs taken under extreme conditions in Alaska, Canada, and Greenland. This body of work presents the reality of sad beauty through evocative masterworks.

**CONTENTS:** 30 large format Arctic photographs depicting changing human and natural environments.  
[www.lastdaysofthegreatice.com](http://www.lastdaysofthegreatice.com)



The Bee Project at Historical Bohemian Village, Cedar Rapids, Iowa

## The Bee Project: A Collaboration Sponsored by the Grant Wood Art Colony

THE BEE PROJECT is an outdoor, site-specific installation of modular structures resembling beehives populated by bees creatively and often lovingly made by participants from recycled materials. The project’s structures are fabricated from carbon steel mesh in the shape of hexagons painted yellow to resemble a honeycomb and can be placed in any number of configurations, taking into consideration the contour of the landscape, buildings, trees, and paths of foot traffic. The project was developed by Elena Smyrniotis under the auspices of The Grant Wood Art Colony in collaboration with the University of Iowa Office of Sustainability and the Environment, and includes video instructions.

**CONTENTS:** Modular hexagon honeycomb structures from 3’ to 6’ tall; includes educational information to guide students through the process of creating and constructing bees from recycled materials.  
[elenasmyrniotis.com](http://elenasmyrniotis.com)

### CONTACT DAVID J. WAGNER, L.L.C.

David J. Wagner, Ph.D., Curator/Tour Director | 414.221.6878 | [davidjwagnerllc@yahoo.com](mailto:davidjwagnerllc@yahoo.com) | [davidjwagnerllc.com](http://davidjwagnerllc.com)

Member American Alliance of Museums and International Council of Museums